



Colorize

heating appliance with

your stove pipe, wood, pellet, or gas
Stove Bright® high temperature paint
1200°F/650°C



1990 SATIN BLACK



6198 FOREST GREEN



6146 LEATHER BROWN



6199 REDWOOD



6159 METALLIC BROWN



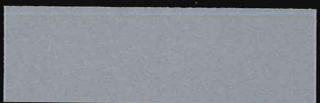
6201 CHARCOAL



6192 RUSSET



6223 EMERALD GREEN METALLIC



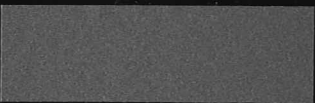
6193 METALLIC GRAY



6224 ADOBE TAN



6194 SKY BLUE



6230 GOLDENFIRE BROWN



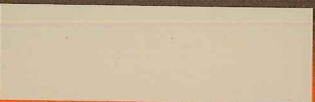
6195 MAHOGANY METALLIC



6265 SILVER



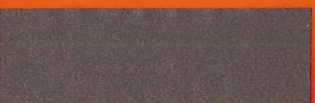
6196 METALLIC BLUE



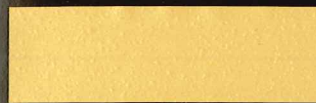
6283 ALMOND



6197 MOSS GREEN METALLIC



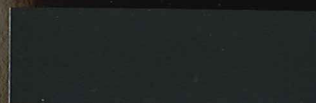
6298 RICH BROWN METALLIC



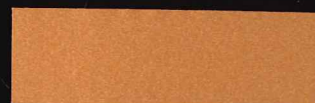
6302 METALLIC GOLD



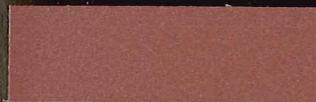
6319 MOJAVE RED



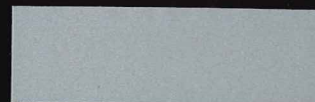
6304 FLAT BLACK



6320 COPPER



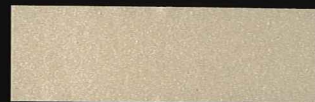
6306 HIGH HEAT PRIMER



6321 PEWTER



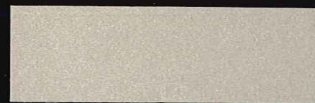
6307 SAND



6324 SUNSET



6309 METALLIC BLACK



6325 SURF SAND



6310 BARK BROWN



6327 GREEN ILLUSION



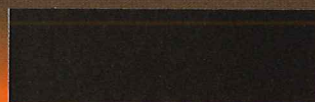
6311 HONEY GLO BROWN



6329 SHIMMERING ROSE



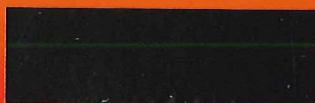
6313 MAUVE



6332 NEW BRONZE



6318 PATRIOT BLUE



VENT PIPE PAINT

Available to you is The Stove Bright® User Guide.
The User Guide provides details about surface
preparation, application, and your first burn.

Actual paint and color chips may vary slightly
from this printed representation.

Find the User Guide before you start your project at:

- www.stovebright.com
- 800-537-7201
- info@forrestpaint.com

Visit our Stove Bright® "How to Videos" at:
www.youtube.com/user/MrStoveBright